

UPCOMING SHOW

Up to 15 works

Aug. 18-Sept. 8, 2010

Pippin Meikle Fine Art

236 Delgado Street

Santa Fe, NM 87501

(505) 992-0400

• SHOW LOCATION SANTA FE, NM



ALETA PIPPIN

The path of exploration

In her ongoing experiments with media and technique, Aleta Pippin continues to develop as an artist, as evidenced in her newest works. Her solo exhibition, titled *The Path of Exploration*, is a testament to her ever-evolving approach to abstract expressionism.

"I'm a bit like the 'mad scientist,' always exploring different techniques with various media," says Pippin. "Currently I'm very much into either using resin to finish the artwork or building up acrylic polymer medium to achieve a similar effect. The heavy clear surface gives the painting a three-dimensional look, particularly when there is a lot of surface texture. Additionally, using the iridescent and interference acrylic paints, I've been able to achieve amazing color and light."

Pippin's oil paintings are similar in that she builds up layers of color; thinning it into glazes.

"Sometimes I sand, then add more clear and color layers until the surface has the look that excites me," she says. "I'd like my collectors to appreciate the vivid color, the building up and the look of a three-dimensional surface. I'd like them to appreciate the journey that I've chosen and that I continually strive to learn more."

Her variety of media includes oil on canvas, gold metal leaf, acrylic and resin on panel. She lets the medium guide her as painting develops.

"I paint spontaneously, interacting with high-key and metallic color as the music I'm listening to influences my motions," says Pippin. "I'm creating a world that is full of color, a visual feast. There are many passages throughout each painting that a collector can explore over a period of many years and yet still find a new passage."

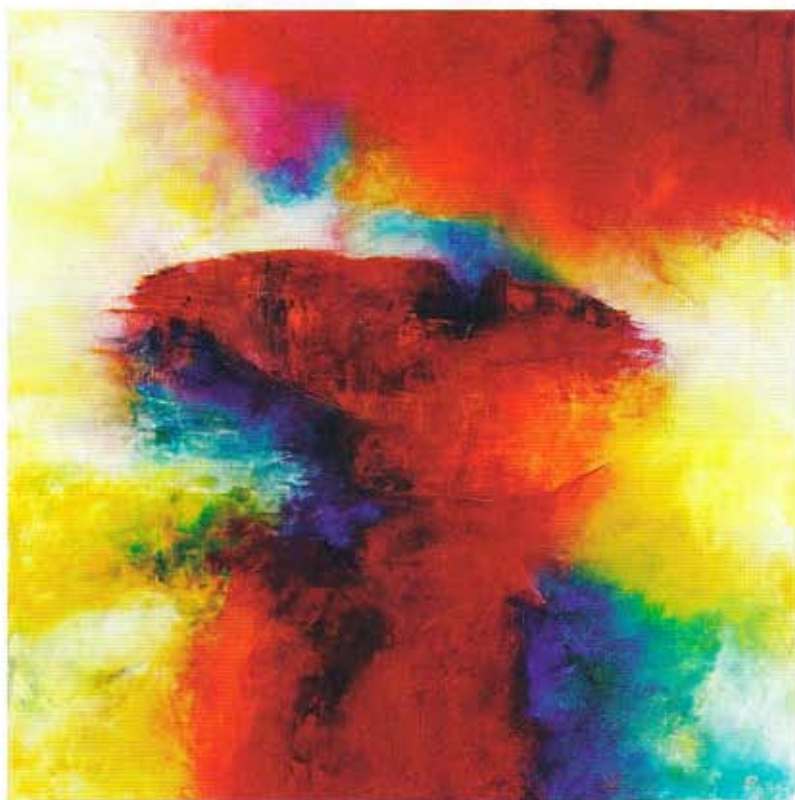
Collectors who have joined Pippin in her artistic journey often say that her work is "joyful."

"They like that the work makes them feel good when they view it," the artist says. "I'd like them to understand that I'm the sort of artist who is always looking forward, exploring new avenues, and broadening my range. I love color. I love the interaction with paint. I love the results. I chose to become an artist and I'm delighted." •

LIGHT ON THE MESA #3, MIXED MEDIA, 30 X 40"

For a direct link to the exhibiting gallery go to

www.americanartcollector.com



HIDDEN CANYON, OIL ON LINEN, 36 X 36"

